

BLOCK-NRC

Project Name:	
Type:	



APPLICATION

The 2x2 BLOCK-NRC offers an easy integration of lighting and acoustic solutions. While the acoustic provides an acoustic solution to the source of noise for optimal sound absorption, seamlessly designed acoustic felt gives design flexibility and personalization for any application. Non-lit can play a significant role in areas that require additional sound absorption. Wide range of color options provide design flexibility and personalization for any project. Perfect for places in need to reduce reverberation such as open offices and lobbies, libraries, retails, hospitality, reception areas and corridors, and commercial interiors.

MOUNTING:

- T-bar recessed, Hard ceiling (drywall).

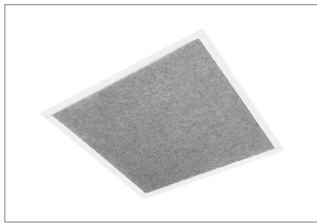
FEATURES:

- Both lit & non-lit sound absorbing 2x2 available in 1" increments.
- Flushed flat style is also available.
- Pair with 360° all around lit (Acrylic Drop) to create and coordinate the space.
- Material rated for NRC (Noise Reduction Coefficient) of 0.90.
- Actual NRC rating can vary depending on the depth.
- Acoustic felt is 100% virgin polyester and 0.5" thick.
- Wide range of felt color (2 standards and 18 premiums) options available. Refer to the last page for color offering.

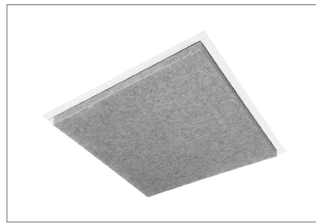
LISTING:

- ARRA compliant. (optional)
- BAA compliant. (optional)
- Luminaire:
 - UL listed for damp location, Type IC.
 - UL 8750 LED equipment in Lighting Products.
 - DLC listed ⁶
 - 5 years limited warranty ⁵

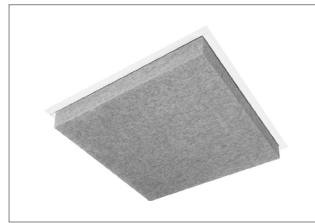
STYLES



Non-lit Flushed Flat



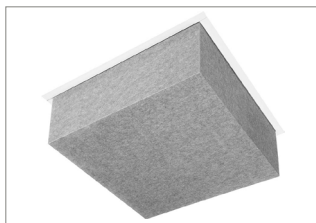
Non-lit 1" DR



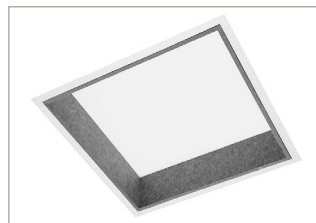
Non-lit 2" DR



Non-lit 4" DR



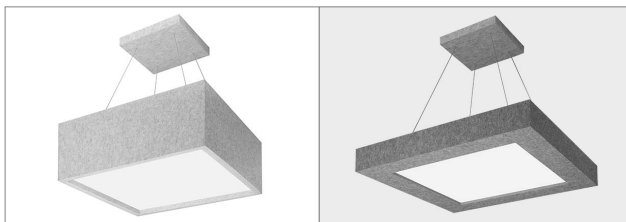
Non-lit 6" DR



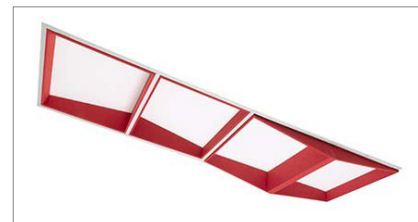
4" RG



Acrylic Drop



Pendant



3"x6" DR-ASY, 3"x6" RG-ASY

BLOCK-NRC

ORDERING INFORMATION

EXAMPLE: BLOCK-NRC-22-NL-DR-4-PW

MODEL	SIZE	TYPE	STYLE	DEPTH ¹	FINISH	MOUNTING
BLOCK-NRC	22 2' x 2' nominal (Std.)	NL Non-lit	DR Drop	F Flushed, flat 2 2" Depth 4 4" Depth 6 6" Depth 8 8" Depth XX Custom depth (1" increments)	SL Slate PW Pewter *CC Premium Color (choose 2 letters from the last page) * Contact factory for lead time and pricing for premium color.	(Blank) Recessed T-bar FK Flange Kit for Hard Ceiling ⁴

ORDERING INFORMATION

EXAMPLE: BLOCK-NRC-22-NL-DR-4-PW

MODEL	SIZE	TYPE	STYLE	DEPTH ¹	FINISH
BLOCK-NRC	22 2' x 2' nominal (Std.)	LIT Lit	RG Regressed	2 2" Depth 4 4" Depth 6 6" Depth 8 8" Depth XX Custom depth (1" increments)	SL Slate PW Pewter *CC Premium Color (choose 2 letters from the last page) * Contact factory for lead time and pricing for premium color.
			DR-ASY Drop Asymmetric RG-ASY Regressed Asymmetric	3" x 6" X" x Y"	3" x 6" side Custom side (X: short, Y: long side) (1" increments)

FIELD
ADJUSTABLE
LUMINAIRE

LED	COLOR TEMP.	LED DRIVER ²	VOLTAGE	MOUNTING
L40/30/25 Selectable 25W/30W/40W LED	-35/40/50K Selectable 35/40/50K	DM 0-10V, 10%~100% (Std.)	UNV 120-277V	(Blank) Recessed T-bar FK Flange Kit for Hard Ceiling ⁴

PRESET	OPTIONS
(Blank) Default Setting PS(Lxx,yyK) Preset Request; XX for watt, YY for CCT * Factory default setting: L30-40K	EMI8 8W EM Battery Backup EMI16 16W EM Battery Backup EMI25 25W EM Battery Backup ILB-CP10-HE-SD-A IOTA 10W SELF-DIAGNOSTIC EM Battery Backup, CEC Compliant ELCU-200 Fail-to-on Emergency lighting, UL924 ⁷ GTD Bodine Generator Transfer Device AMB Anti-Microbial Coating (Matte Skye White) HC403 Microwave bi-level Occupancy sensor, adjustable via DIP switch ³ HRC-05 Remote control for HC403 sensor ARRA Assembled in USA

LIGHTING CONTROL SYSTEM	
PPA102S	<Bluetooth> Bluetooth Powerpack (Consult factory for installation location)

BLOCK-NRC

FIXED LUMINAIRE

LED		COLOR TEMP.		LED DRIVER ²			
36LED xxLED	36W LED Custom Watt <small>* Contact factory for custom wattage or lumen requirement.</small>	-35K -40K	3500K 4000K	DM DM1 SD40 SDxx TD30/70 TDxx/yy	0-10V, 5%~100% (Std.) 0-10V, 1%~100% 40%/100% Bi-Level Step dim xx%/100% Bi-Level Step dim (specify xx: 10~70%) 30%/70%/100% Tri-Level Step dim xx%/yy%/100% Tri-Level Step dim (specify xx,yy: 10~70%)	LDE1 TDM ELV LTEA2W	Hi-lume 1% EcoSystem LED driver with Soft-on, fade-to-black, 100%~1% Triac Dim. (120V only) ELV, Reverse phase or trailing-edge, (120V only) Hi-lume 1% 2-wire LED driver (120V forward phase only)

VOLTAGE		MOUNTING		OPTIONS			
UNV	120-277V	(Blank) FK	Recessed T-bar Flange Kit for Hard Ceiling ⁴	EMI8 EMI16 EMI25 ELCU-200 GTD	8W EM Battery Backup 16W EM Battery Backup 25W EM Battery Backup Fail-to-on Emergency lighting, UL 924 Bodine Generator Transfer Device	AMB HC403 HRC-05 ARRA BAA	Anti-Microbial Coating (Matte Skye White) Microwave bi-level Occupancy sensor, adjustable via DIP switch ³ Remote control for HC403 sensor Assembled in USA Buy American Act compliant

LIGHTING CONTROL SYSTEM	
PPA102S	<Bluetooth> Bluetooth Powerpack (Consult factory for installation location)

NOTES:

1. Refer to dimensions page for more details.
2. Refer to Table1 to find compatible dimmer switch.
3. Refer to Table2 to find default setting.
4. Supplied in separate boxes, field installed.
5. This limited warranty covers electrical parts only and does not apply to labor, equipment lease, or defect from improper installation or operation.
6. DesignLights Consortium® (DLC) qualified product. Not all versions of this product may be DLC qualified. Please check the DLC Qualified Products List at www.designlights.org/QPL to confirm which versions are qualified.
7. Shipped separately.

BLOCK-NRC

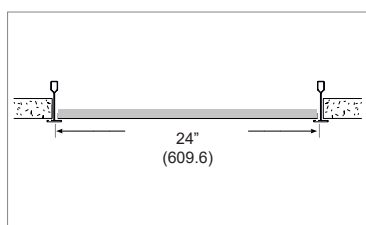
CONFIGURATIONS

Luminaire	Size	LED	Lumen Output (3500/4000/5000K)	Lumen Efficiency (3500/4000/5000K)
Field Adjustable	2' x 2'	L40	4400lm / 4400lm / 4480lm	110 / 111 / 112 lm/W
		L30	3390lm / 3420lm / 3450lm	113 / 114 / 115 lm/W
		L25	2900lm / 2925lm / 2950lm	116 / 117 / 118 lm/W
Fixed	2' x 2'	36LED	4428lm / 4536lm / NA	123 / 126 lm/W / NA

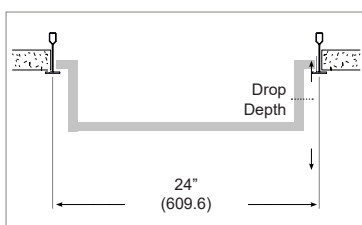
DIMENSIONS

* Acoustic felt is 0.5" thick.

NON-LIT

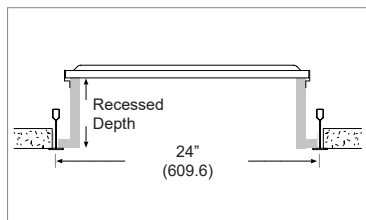


F (Flushed flat)

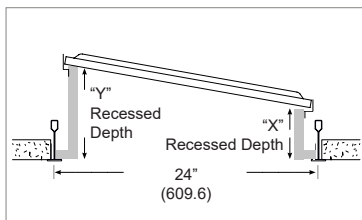


DR (Drop)

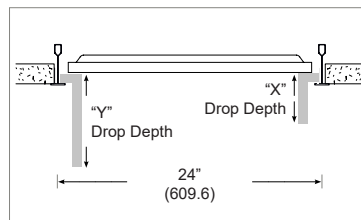
LIT



RG (Recessed)



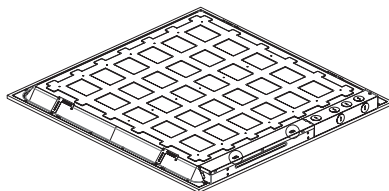
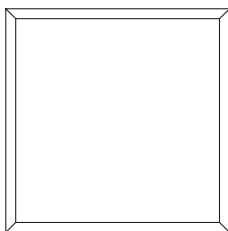
RG-ASY (Recessed Asymmetric)



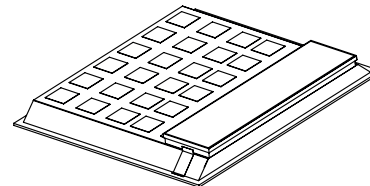
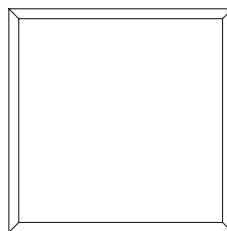
DR-ASY (Drop Asymmetric)

LUMINAIRE

**FIELD
ADJUSTABLE
LUMINAIRE**



**FIXED
LUMINAIRE**



Length: 23-3/4 (603)
 Width: 23-3/4 (603)
 Depth: 1-5/8 (41)
 * Depth increased up to 3" with HC403 option
 * Depth increased up to 5.2" with EM

All dimensions are in inches (millimeters).

Length: 23-3/4 (603)
 Width: 23-3/4 (603)
 Depth: 1-5/8 (41)
 * Depth with Junction Box: 2-7/8" (74)
 * Depth increased up to 3" with HC403 option
 * Depth increased up to 5.2" with EM

APPROVED DIMMER SWITCH (Table 1)

Model#	Brand	Manufacturer	Manufacturer Part #
DM (0-10V 10%~100%)	-	<Lutron>	Maestro MS-Z101, Nova NTSTV, Diva DVSTV
		<Philips>	Sunrise SR1200ZTUNV
DM (0-10V 5%~100%)	-	<Leviton>	IllumaTech IP7 series
		<Lutron>	Visit www.lutron.com/advance for a list of dimmers (Mark VII) that will work with this driver
		<Philips>	Sunrise: SR1200ZTUNV
		<Easeic>	EID110U
DM1 (0-10V 1%~100%)	-	<Lutron>	Nova: NFTV- dimmer plus PP-DV relay pack(s), NTSTV-DV-dimmer Diva: DVTV-dimmer, DVSCVT-dimmer, plus PP-DV relay pack(s), DVSTV-dimmer, DVSCSTV-dimmer GRAFIK Eye QS: QSGRJ-XP, plus GRX-TVI 0-10V interface GRAFIK Eye QS with EcoSystem: QSGRJ-XE, QSGR-XE, plus GRX-TVI 0-10V interface PowPak: RMJ-5T
		<Leviton>	Leviton: IP710-LFZ
		<Philips>	Sunrise: SR1200ZTUNV
ELV/TDM	ERP	<Lutron>	S-603PG, DVCL-153P, DV-600P, TGCL-153P, S-600P, DVELV-303P, SELV-300P, TG-600P, LG-600P, CT-103P, MAELV-600, FAELV-500
		<Leviton>	IPI06-1LZ, 6631-2, VPE06, 6683-IW, 6161, 6633-P, IPE04
		<Cooper>	DLC03P, SLC03P, DAL06P
		<Lightolier>	ZP260QEW
LDE1	Lutron Hi-lume 1% EcoSystem	<Lutron>	PowPak Dimming Modules: RMJ-ECO32-DV-B, FCJ/FCJS-ECO Energi Savr Node (120V only): QSN-1ECO-S, QSN-2ECO-S GRAFIK Eye QS/Homeworks QS control unit (120V only): QSGRJ-_E(wireless) QSGR-_E Quantum Hub (120V only): QP2-_2C/4C/6C/8C Homeworks QS/myRoom Plus power module (120V only): LQSE-2ECO-D
LTEA2W	Lutron Hi-lume 2-wire (120V forward voltage only)	<Lutron>	Visit http://www.lutron.com/TechnicalDocumentLibrary/369543_ENG.pdf for a list of compatible dimmer switches.
PHSR ¹	Philips Xitanium Sensor-Ready	<Illumra>	<u>Single Rocker Self-Powered Light Switch (on/off, dim-up/down)</u> Illumra# ZBT-S1AWH Digi-Key# 1082-1033-ND <u>Dual Rocker Self-Powered Light Switch (on/off, dim-up/down, scene.1,2)</u> Illumra# ZBT-S2AWH Digi-Key# 1082-1034-ND

* If you want other specific kind, please contact us.

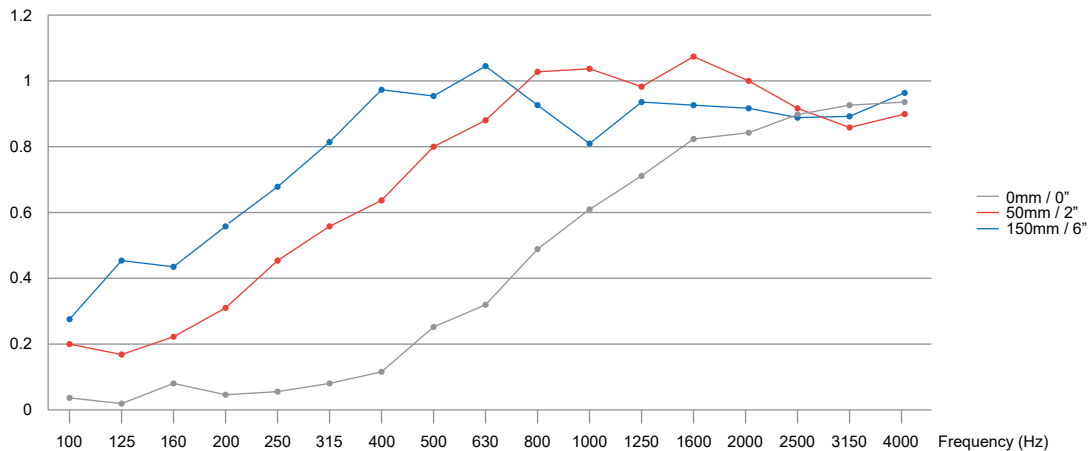
HC403 FACTORY SETTING (TABLE 2)

Detection Area	100%
Hold-time	5 sec
Daylight sensor	Disable
Stand-by period (tri-level control)	10 sec
Stand-by dimming level	10%

* See a separate attachment to find more setting options.

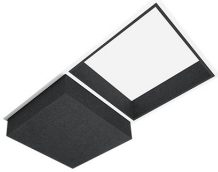
NRC COMPARISON

Frequency/Hz	100	125	160	200	250	315	400	500	630	800	1000	1250	1600	2000	2500	3150	4000	a	NRC
0mm / 0"	0.03	0.01	0.09	0.04	0.05	0.09	0.12	0.25	0.32	0.49	0.61	0.72	0.82	0.85	0.91	0.94	0.95	0.44	0.45
50mm / 2"	0.20	0.16	0.22	0.32	0.46	0.56	0.63	0.80	0.89	1.03	1.04	0.99	1.07	1.00	0.93	0.87	0.92	0.81	0.80
150mm / 6"	0.29	0.46	0.44	0.57	0.68	0.81	0.97	0.96	0.91	1.04	0.92	0.80	0.94	0.94	0.91	0.90	0.91	0.97	0.90

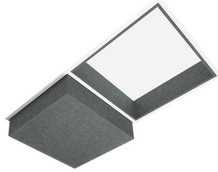


BLOCK-NRC

<STANDARD>



SL: SLATE



PW: PEWTER

<PREMIUM>



TR: TAR



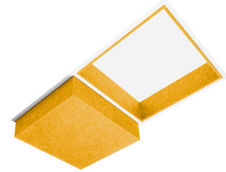
MD: MANDARIN



OC: OCHRE



GR: GRASS



SS: SUNSHINE



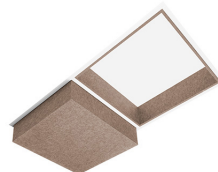
FR: FROST



IV: IVORY



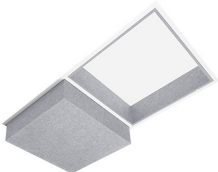
LN: LINEN



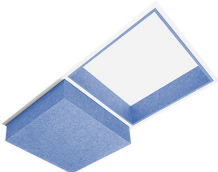
EC: ECRU



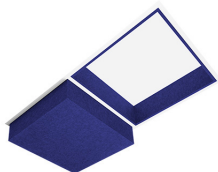
BR: BARK



CH: CHAMBARY



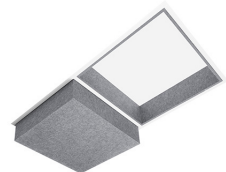
SK: SKY



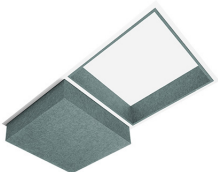
CB: COBALT



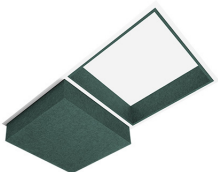
FO: FOSSIL



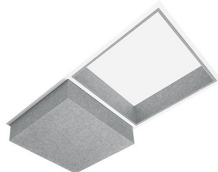
GE: GREIGE



CD: CADET



MC: MALACHITE



SM: SMOKE

1. Standard finish is free of charge.
2. Premium finish with extra charge. Please contact factory for more information.