

COVE

Project Name:	
Type:	



APPLICATION

The 2" cove strip light when installed in rows are design to eliminate shadows. sAs with other strip fixtures, it is an effi cient solution for both task and general lighting needs. Used for cove light, display and vending machines.

FEATURES:

- White post-painted cold rolled steel housing to prevent sharp edge. Matte white over rust inhibiting phosphate coating for smooth and maximum light reflect (minimum 85%).
- Variety of size channel strips are available with single line.
- Standard 2ft, 3ft and 4ft fixture combined end to end for continous rows.

MOUNTING:

- Surface mounting or directly to wall structure.
- Continuous row mounting available.

LAMP:

- Standard T8, T5 and T5HO lamps are available.
- Pressure-lock lamp holders or easy twist lock lamp sockets.
- Lamp not included.

ELECTRICAL:

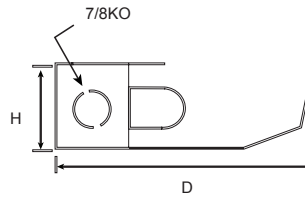
- High power factor instant start electronic ballast for T8 lamps are sound rate A, Class P, minimum starting temperature 0°F (-18°C), <10% THD and input voltage ranges of 120 to 277 volts comes as standard.
- High power factor programmed start electronic ballast for T5 and T5HO lamps are sound rate A, Class P, minimum starting temperature 0°F (-18°C), <10% THD and input voltage ranges of 120 to 277 volts comes as standard.
- Pre-wired ballast with quick wire connectors provided as standard.

LISTING:

- UL/CUL listed and labeled.
- Listed to UL1598.
- Suitable for damp locations.
- ARRA compliant (optional).

CONFIGURATIONS

Series	T8 Fixture Length	T8 Lamp	T5 Fixture Length	T5 Lamp
COVE	48 (1219.2)	(1) 25T8ES	22-7/16 (569.9)	14T5
	48 (1219.2)	(1) 28T8ES	34-5/16 (871.5)	21T5
	48 (1219.2)	(1) 32T8	46-1/8 (1171.6)	28T5



Specifications: T8

Depth: 5-1/2 (139)
Height: 2 (50.8)

Specifications: T5

Depth: 4-1/2 (114)
Height: 1-1/2 (38)

All dimensions are in inches (millimeters).

ORDERING INFORMATION

EXAMPLE: COVE-4-1-32-UNV

MODEL	LENGTH	# OF LAMPS	LAMP TYPE	BALLAST
COVE	2 2' Length	1	14T5 F14T5 (22")	(Blank) T8 Electronic, Instant Start, <10% THD or T5 Electronic, Programmed Start, <10% THD PS T8 Electronic, Programmed Start, <10% THD
	3 3' Length		21T5 F21T5 (34")	
	4 4' Length		28T5 F28T5 (46")	
			24T5HO F24T5HO (22")	
			39T5HO F39T5HO (34")	
			54T5HO F54T5HO (46")	
			25T8ES F25T8 ES (48")	
			28T8ES F28T8 ES (48")	
			32 F32T8 (48")	

VOLTAGE	OPTIONS
UNV 120-277V	SR Specular hammer-tone reflector installed
120 120V	CR Clear Anodized Specular Aluminum Reflector
277 277V	DM Dimming Ballast ¹
347 347V	EM Emergency Ballast ²
	EMC CEC compliant EM ³
	DC Dust Cover
	ARRA Assembled inUSA for Buy American Act

NOTES:

1. Dimming ballast options, see page 391.
2. Must specify voltage, not available with 347V.
3. Check with factory for more details.