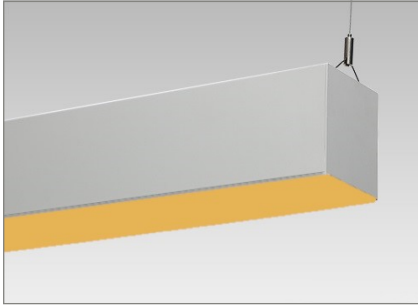


CUBE4-AMBER

Project Name:	
Type:	



APPLICATION

The specific 590nm Amber LEDs provide safe lighting for photosensitive applications such as hospitals, medical facilities and containment sensitive manufacturing facilities.

FEATURE:

- Housing is formed by cold-rolled steel with a snap-in acrylic lens.
- AB switching (2 circuits) optional for White and Amber LEDs.

MOUNTING:

- Pendant, surface and wall mount.

LED:

WHITE LED:

- Samsung LEDs.
- Color Temperature: 2700/3000/3500/4000/5000 (K).
- Color Rendering Index: > 80 (optional > 90).
- Nominal Lamp Life: 100,000 hours.
- Reported L70 hours: +60,000 (55°C).

AMBER LED:

- Lumileds LEDs.
- 590nm.

FINISH:

- Standard powder-coat textured white painted finish on exposed trim, consult factory for custom colors.
- Comes with snap-in acrylic lens as standard.

ELECTRICAL:

- High power factor electronic driver, operate from a 120 ~ 277 Vac input range, 50 / 60 Hz.
- Features included over voltage protection, surge, short circuit protection and over load protection.
- Power Factor: typical > 0.95, THD < 20, meets Class 1 or Class 2 circuit.
- 0-10V dimmable driver as standard.
- 0-10VDC dimming 1%~100%.
- Operating temperature: -4°F (-20°C) ~ 122°F (50°C).

<ELCU-200>

- Guarantees emergency lighting remains ON or is turned on when power to the control device is lost.
- Interfaces with fire alarm panel or security system.
- "Watchdog" feature allows emergency loads to be controlled in tandem with normal power loads.
- UL listed for use in emergency circuits.

LISTING:

- UL / CUL listed.
- Listed to UL 1598 and UL 8750.
- UL listed for dry & damp location.
- CEC Compliant EM (please contact for more information)
- Assembled in USA
- 5 years limited warranty.

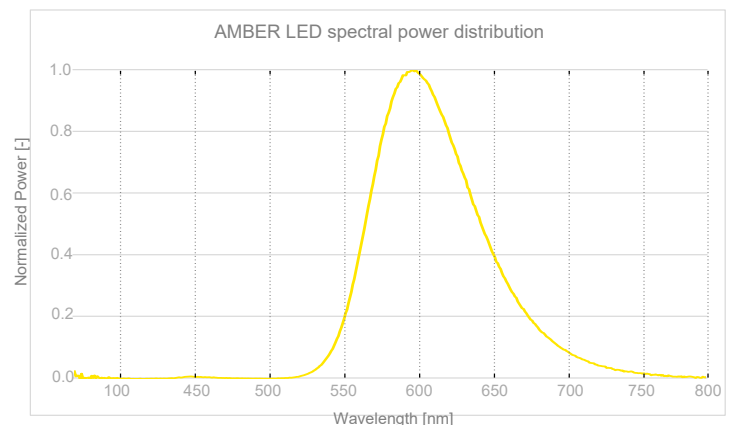
CONFIGURATIONS - WHITE LED

Series	Size	LED	AC Input	Lumen Output	Lumen Efficiency
CUBE4	2'	1WHTL	4.5W	549.8 lm	122.18 lm/W
		1WHTM	9W	1099.6 lm	122.18 lm/W
		1WHTH	13.5W	1698.8 lm	125.36 lm/W
		2WHTL	9W	1099.6 lm	122.18 lm/W
		2WHTM	18W	2199.2 lm	122.18 lm/W
		2WHTH	27W	3397.7 lm	125.36 lm/W
	4'	1WHTL	9W	1099.6 lm	122.18 lm/W
		1WHTM	18W	2199.2 lm	122.18 lm/W
		1WHTH	27W	3397.7 lm	125.36 lm/W
		2WHTL	18W	2199.2 lm	125.36 lm/W
		2WHTM	36W	4513 lm	125.36 lm/W
		2WHTH	54W	6378 lm	118.1 lm/W
	8'	1WHTL	18W	2199.2 lm	125.36 lm/W
		1WHTM	36W	4513 lm	125.36 lm/W
		1WHTH	54W	6378 lm	118.1 lm/W
		2WHTL	36W	4513 lm	125.36 lm/W
		2WHTM	72W	9026 lm	125.36 lm/W
		2WHTH	90W	10478.3 lm	116.4 lm/W

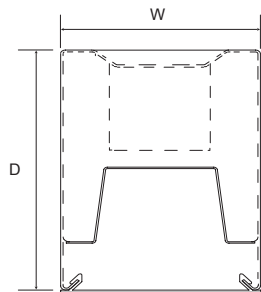
WHITE CCT	Multiplier		
	3000K	3500K	5000K
	0.983631	0.991815	1.016369

CONFIGURATIONS - AMBER LED

Series	Size	LED	AC Input	Lumen Output	Lumen Efficacy
CUBE4	2'	1ABR	9W	1151 lm	127.8 lm/w
		2ABR	18W	2302 lm	
		3ABR	27W	3453 lm	
	4'	1ABR	18W	2302 lm	
		2ABR	36W	4604 lm	
		3ABR	54W	6903 lm	
	8'	1ABR	36W	4604 lm	
		2ABR	72W	9208 lm	
		3ABR	108W	13813 lm	

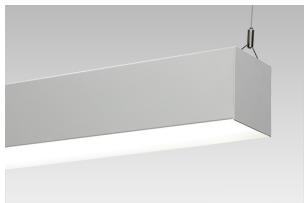


CUBE4-AMBER

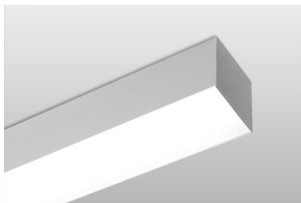


Specifications: CUBE4
Width: 4 (101)
Depth: 4 (101)
All dimensions are in inches (millimeters).

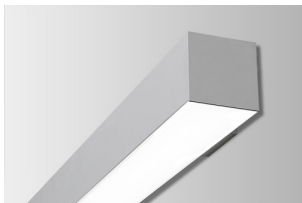
WEIGHT		
Item	lbs	kg
CUBE 4 2FT PENDANT	8.36	3.79
CUBE 4 3FT PENDANT	10.95	4.97
CUBE 4 4FT PENDANT	13.70	6.22
CUBE 4 8FT PENDANT	24.97	11.33
CUBE 4 HC90 PENDANT	17.84	8.09
CUBE 4 X PENDANT	18.50	8.39
CUBE 4 T PENDANT	13.21	5.99



CABLE

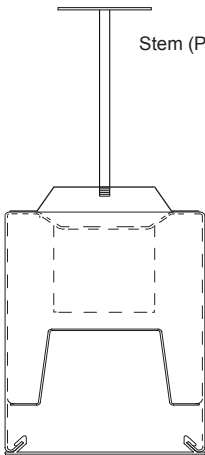
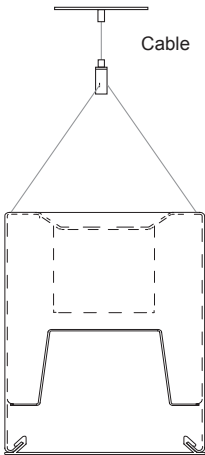
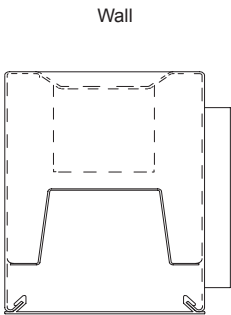
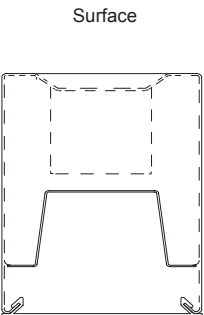


SURFACE



WALL

- MOUNTING DETAILS



CUBE4-AMBER

ORDERING INFORMATION

EXAMPLE: CUBE4-IND-4-2ABR-1WHT-40K-UNV

MODEL	ROW ¹	SECTION ²	Amber LED	White LED	WHITE CCT	WHITE CRI
CUBE4-IND (Individual Mount) CUBE4-CON (Continuous Row Mount) <small>* Number of circuit(s) should be determined by the customer prior to ordering the continuous run considering the AC input voltage and total run wattage.</small>	xx' Specify nominal overall row length in 1' increments (Continuous runs)	2 2' Length 4 4' Length 8 8' Length ³	1ABR 1 Row Amber LED 2ABR 2 Row Amber LED 3ABR 3 Row Amber LED	(Blank) No White LED 1WHTL 1 Row White LED, Low 1WHTM 1 Row White LED, Medium 1WHTH 1 Row White LED, High 2WHTL 2 Row White LED, Low 2WHTM 2 Row White LED, Medium 2WHTH 2 Row White LED, High	-27K 2700K ⁹ -30K 3000K -35K 3500K -40K 4000K -50K 5000K	(Blank) 80+ CRI C9 90+ CRI ⁸
CUBE4-CM (Custom)	Must provide a sketch on the last page		* Max 3 Arrays Total			

MOUNTING	VOLTAGE	EM SECTION ^{4,5}	FINISH	CORD FINISH ¹⁰	CEILING TYPE (for pendant)
(Blank) Pendant S Ceiling Surface W Wall	UNV 120-277V 120 120V 277 277V 347 347V	(Blank) None EM 1SE 1 Section 2SE 2 Section xSE X Section	(Blank) Matte White RAL #9003 (Std.) *BK Black RAL #9011 *SV Silver (RAL #9022) **CC Custom Color ¹¹ *CSS Custom Canopy Color (White is Std.) *AMB Anti-Microbial Coating (Matte Skye White) <small>* Non-standard finish with extra charge. ** CC: additional charge & set up fee. Provide RAL# code.</small>	(Blank) White (Std.) BKC Black <small>*Non-standard finish with extra charge.</small>	X1 15/16" grid T-bar ceiling X2 Hard ceiling X3 Sloped Hard ceiling X4 9/16" T-bar ceiling

SUSPENSION LENGTH	LED DRIVER	CIRCUIT	OPTIONS
AC48 Adjustable Aircraft Cable Canopy 48"L AC96 Adjustable Aircraft Cable Canopy 96"L ST24 Stem Canopy 24"L ST48 Stem Canopy 48"L <small>* Contact factory for custom length. 1 pair (2 aircraft cables) standard for up to 8' length.</small>	(Blank) 0-10V dim to 1% (Std.)	1CS One Circuit for all 2CS Two Circuits for Amber & White LED	EMG5 5W EM Battery Backup (CEC Compliant EM) ^{6, 12} EMG8 8W EM Battery Backup (CEC Compliant EM) ^{6, 12} EMG16 16W EM Battery Backup (CEC Compliant EM) ^{6, 12} EMG25 25W EM Battery Backup (CEC Compliant EM) ^{6, 12} ELCU-200 Fail-to-on Emergency lighting, UL924 ⁷ F1 Single fuse for 120v/277v/347v ¹³ F2 Double fuse for 208v/240v ¹³ COC Separated EM feed for City of Chicago code compliance E1F End feed on one end (Pre-drilled hole for 1/2" fitting) E2F End feed on both ends (Pre-drilled holes for 1/2" fitting)

NOTES:

- Specify only when Continuous Row Mount.
- No need to select, if same as row length and section length.
- Comes with 1pc 8ft lens.
- EM is installed in last 4' of luminaire sections. Separate section required 2SE or specified. Must specify voltage, not available with 347V.
- In combination of Amber and White configuration, EM light must be specified.
- Contact factory for other emergency ballast options.
- Shipped separately.
- Lumen per watt is around 15% less than standard CRI (80+).
- Available with C9 (CRI 90+) only.
- Cord is available in white or black (Black is not available with EM).
- Refer to color charts (RAL and/or Cardinal) in the separate attachment.
- Must specify voltage, not available with 347V.
- Must specify voltage.

CUBE 4 LIT CONNECTOR PATTERNS

The lit connector system allows continuous illumination all the way through the corner section.

Instruction:

- Please provide sketches illustrating corner types, overall dimensions including corner dimensions, and locations required.
- HC90, TC, and XC connectors are 90 degree corners (overall, outside dimension).