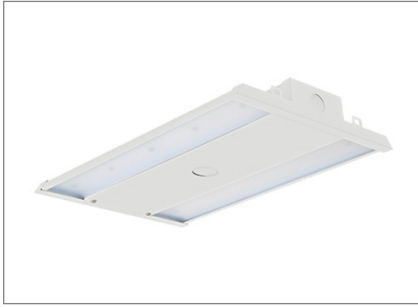


# LDB

Project Name:	
Type:	



**APPLICATION**

Suitable for commercial, retail and institutional applications including gymnasiums, factories and warehouses.

**FEATURES:**

- Visual comfortable light comes from a simple contour.
- Best choice for replacing fluorescent lamps with high efficacy.
- Advanced thermal management aluminum alloy with white coat finish housing.
- Wattage and CCT can be changed by switch selection on the controller.

**MOUNTING:**

- Suspended Mounting (Air craft cables included as standard).

**OPTIC:**

- Prismatic diffuser UGR<28.

**DISTRIBUTION:**

- Standard distribution.

**LED:**

- CCT And Wattage Adjustable.
- Color Temperature: 4000/5000 (K)
- Color Rendering Index: Ra > 70
- Service life: Greater than 50,000 hours.

**ELECTRICAL:**

- 0-10V dimming which continuous dims to 10%
- Input Voltage: 120-277V
- Power Factor: +0.9
- Operating hours : 50,000 hours.
- Operating Temperature: -40°F (-40°C) ~ 122°F (50°C).

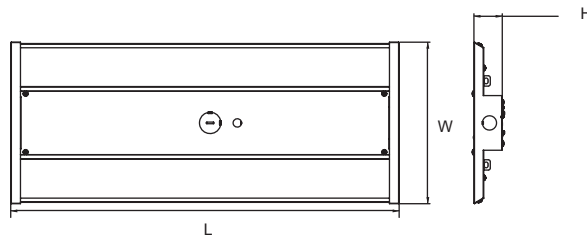
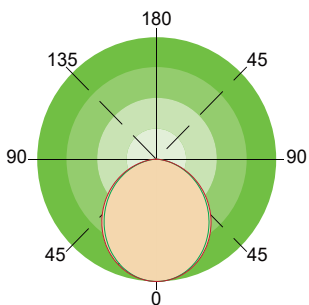
**LISTING:**

- UL listed and labeled.
- DLC premium listed. <sup>1</sup>
- Suitable for damp locations.
- 5 years limited warranty.

**CONFIGURATIONS**

Series	SETTING	AC INPUT	Lumen Output (4000/5000K)	Lumen Efficiency (4000/5000K)
LDB	100%	210W	30000lm	142 lm/W
	80%	172W	25000lm	139 lm/W
	60%	129W	20000lm	154 lm/W
	40%	86W	13600lm	151 lm/W

**PHOTOMETRIC**



All dimensions are in inches (millimeters).

Specifications: LDB

- Length: 25.6 (650)
- Width: 9.85 (250)
- Height: 1.75 (44)
- Weight
- 210W: 5.957 lbs

# LDB

**ORDERING INFORMATION**

*EXAMPLE: LDB-2FT-4SL-2T-UNV*

MODEL	LED		COLOR TEMP.		VOLTAGE		LENS	
LDB-2FT	4SL	Selectable 86/129/172/210W LED (IC rated)	-2T	Selectable 40/50K	UNV HV	120-277V 347/480V	(Blank)	Clear Lens

OPTIONS		LIGHTING CONTROL SYSTEM	
<b>BRI823</b> <b>EM15</b> <b>ANT-6-4T</b> <b>PMB</b>	Motion sensor with 0-10V dimming 2430 LUMEN EM Battery Backup 0-10V dimming PIR motion sensor 3/4" conduit pendant mount	<b>PPA102S</b>	<Bluetooth> Bluetooth Powerpack (Consult factory for installation location)

NOTES:

- DesignLights Consortium® (DLC) qualified product. Not all versions of this product may be DLC qualified. Please check the DLC Qualified Products List at [www.designlights.org/QL](http://www.designlights.org/QL) to confirm which versions are qualified.