

# INSTALLATION MANUAL

## GEN II /LED Linear Light

### IMPORTANT SAFETY INSTRUCTION

Read this installation guide prior to attempting installation. Always turn OFF the main power before starting your installation. Consult a qualified electrician before installation. Installation should be carried out by a qualified electrician.

During installation, basic safety precautions should always be followed, including the following listed.

1. Do not install the lighting system in a wet location.
2. Ensure the appropriate connectors match the luminaire fixture.
3. Do not install any part of the luminaire less than 5 feet above the floor.
4. Do not install any luminaire assembly closer than 5 inches from any window treatments, i.e., curtain, blinds or any similar combustible type material.
5. Do not attempt to energize anything other than the luminaire fixtures.
6. To reduce the risk of fire and electric shock, do not attempt to connect to power tools, extension cords, appliances, or the like, to the track.
7. Maintenance of the luminaires should be performed by person(s) familiar with the luminaires construction and any hazards involved. Regular fixture maintenance programs are recommended.
8. Do not exceed the nominal supply voltage or amperage ratings.
9. Turn the power OFF at the fuse or circuit breaker box before doing any installation or maintenance activities.
10. Wear rubber soled shoes and work on a sturdy wooden or non-conductive ladder.
11. The lighting product must be mounted in locations and at heights in compliance with the National Electrical Code and with local building codes. Installing contrary to instruction may cause unsafe conditions.
12. To avoid hazards to children, take accountability for all parts and dispose all packing materials properly.
13. It may be necessary to clean the refractor / lens. Frequency of cleaning will depend on ambient dirt level and minimum light output which is acceptable to the user. Refractor / lens should be washed in a solution of warm water and any mild, non-abrasive household detergent, rinsed with clean water and wiped dry. Should optical assembly become dirty on the inside, wipe refractor / lens and clean in above manner, replacing damaged gaskets as necessary.
14. Call the Technical Support department about any installation questions.
15. Do not install a damaged product. This luminaire has been properly packed so that no parts should have been damaged during transit. Inspect to confirm. Any part damaged or broken during or after assembly should be replaced.
16. These instructions do no purpose to cover all details or variations in equipment nor to provide every possible contingency to meet in connection with installation, operation or maintenance. Should further information be desired or particular problems arise, not covered sufficiently for the purchaser's or owner's purposes, please contact the Technical Team.

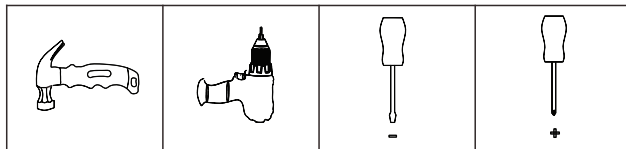
### CAUTION

This equipment is intended to be installed only by qualified personnel. The installation must be made in accordance with the current edition of the National Electrical Code (NEC) and all applicable state and local building codes. The final installation must be approved by the appropriate, qualified electrical / building inspector(s). Improper installation may result in a fire or electrical hazard. Ensure the electrical power to the circuit has been disconnected before installing the electrical system

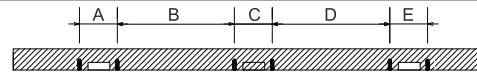
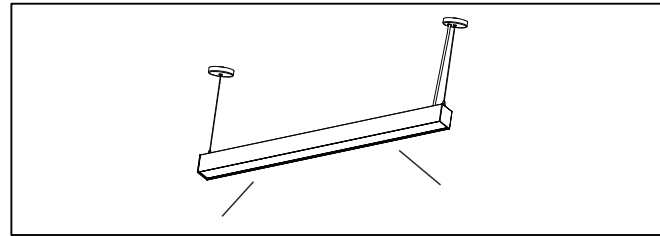
### WARNING

- Risk of fire. Most dwellings built before 1985 have supply wire rated at 60°C.
- Consult a qualified electrician before installation.
- Properly ground electrical enclosure.
- To prevent wiring damage or abrasion, do not expose wiring to edges of sheet metal or other sharp objects.
- Use only UL approved wire input/output connections. Minimum size 18 AWG or 14AWG if there are any continuous runs.
- If the fixtures are connected in a continuous run, do not exceed allowable number of fixtures in series/power in continuous runs.
- Inrush currents must be taken in account by the electricians to account for proper circuit design.

### TOOL

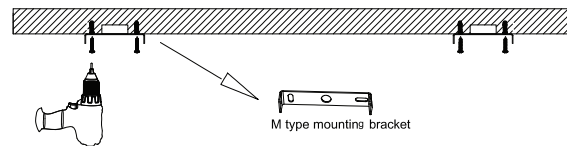


## A. Canopy Suspension Installation

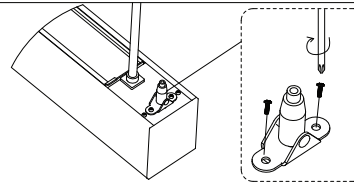


N0.	Size	A(in)	B(in)	C(in)	D(in)	E(in)
1	2ft	2.760	18.858	2.760	/	2.760
2	4ft	2.760	42.480	2.760	/	2.760
3	6ft	2.760	66.102	2.760	/	2.760
4	8ft	2.760	43.189	2.760	43.189	2.760

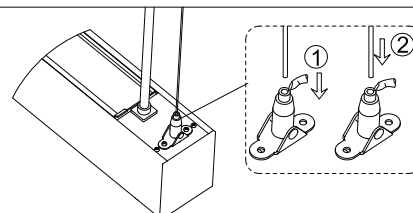
1. Drill a hole of 5.0mm in diameter as shown in the figure at the location required for installation. Then hammer the plastic anchor into the hole.



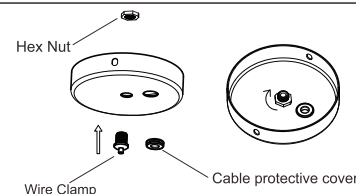
2. Insert PA4\*30 screws into the M type mounting bracket and then drill into the plastic anchor.



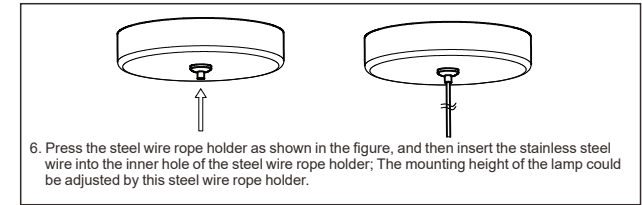
3. Lock the steel wire rope pedestal to the ends plates with PM4\*8 Screws.



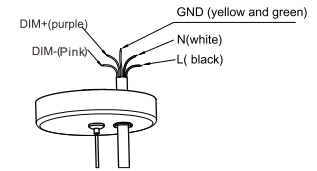
4. Press down the inner hole of the steel wire rope pedestal, let the steel wire rope go through the hole.



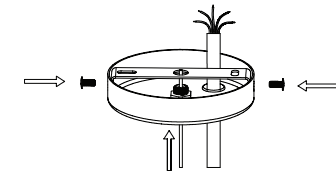
5. Insert the wire clamp into the middle hole of the disc and tighten the wire clamp with hex nut; Clip the cable protective cover into the AC line hole of the disc.



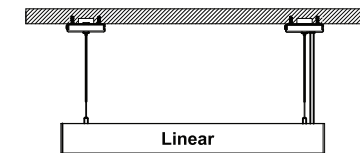
6. Press the steel wire rope holder as shown in the figure, and then insert the stainless steel wire into the inner hole of the steel wire rope holder; The mounting height of the lamp could be adjusted by this steel wire rope holder.



7. Insert the AC input cable through the cable protective cover and connect it with the AC line by the corresponding connection wire with L, N, GND.



8. Adjust the length of the AC input cable, align the side hole of the canopy and the M mounting bracket as shown in the figure, then tighten the screw.

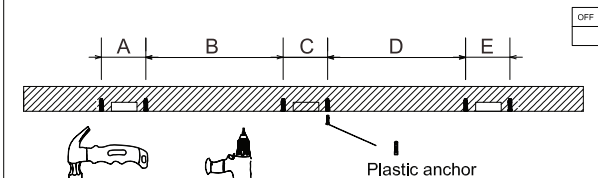


9. The installation is completed.

## B. Linkable Instruction

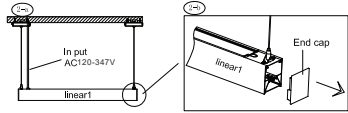
Note: Only available for Linkable Products.

- ① Measure the ceiling, make down the position for lineae 1, install the first Linear Light to the ceiling as instruction of A Rope Suspension Installation.



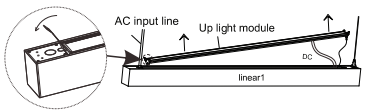
N0.	Size	A(in)	B(in)	C(in)	D(in)	E(in)
1	2ft	2.760	18.858	2.760	/	2.760
2	4ft	2.760	42.480	2.760	/	2.760
3	6ft	2.760	66.102	2.760	/	2.760
4	8ft	2.760	43.189	2.760	43.189	2.760

② Install Linear 1, then connect AC line; remove one end cap as show on (2-b)



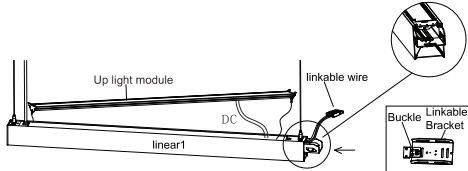
OFF

2-C Lift up the up-light module as the picture shows.



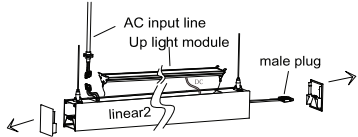
OFF

2-d Insert the linkable bracket into the Linear1, connect with buckle inside the Linear1, take out the inside linkable wire. (Five color)



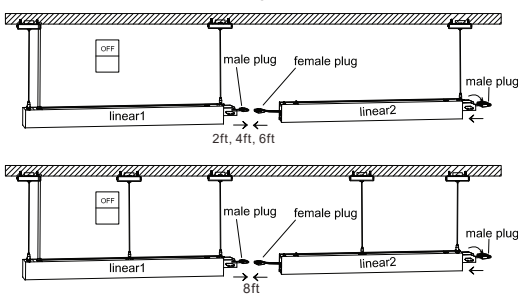
OFF

③ Insert the Linear Light as Step 2 and adjust the steel wire rope in the same height. Then Move out two end caps of Linear2, lift up the up light module, disconnect the AC wire. keep the female plug to the side ends

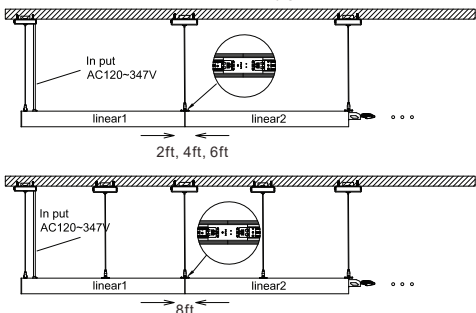


OFF

④ Connect the male plug of Linear 1 and female plug of Linear2, insert the bracket to the Linear 2 make them seamless linkable together.



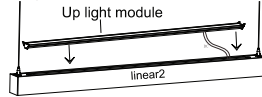
⑤ Check the status after linked make sure no any gap between two linears.



OFF

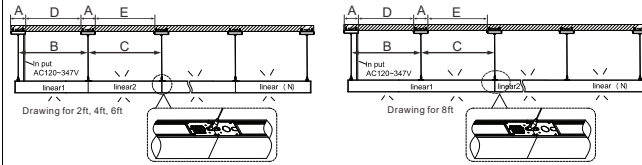
OFF

⑥ Make sure the male and female plugs have been connected well, press down the up light module, put it back to the top of Linear1 and Linear2



OFF

⑦ Install the Linear Light 3,4,5,6 and7 as above method, keep one main input cord on rose side for wiring andg rounding Adjust the steel wire rope inthe same height. Then finish the installation.



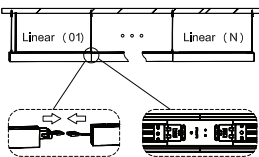
NO.	Size	A(inch)	B(inch)	C(inch)	D(inch)	E(inch)
1	2FT	3.94	22.91	23.62	18.98	19.69
2	4FT	3.94	46.54	47.24	42.6	43.3
3	6FT	3.94	70.16	70.87	66.22	66.93

NO.	Size	A(inch)	B(inch)	C(inch)	D(inch)	E(inch)
1	8FT	3.94	46.54	47.24	42.6	43.31

A size is the canopy diameter size. D size is from the first Canopy edge to the second edge.

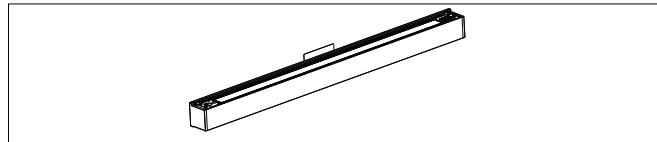
NOTE:  
LED LINEAR CAN BE GAPLESS LINKABLE TOGETHER AS NEEDED,  
(if you order to use 18# cord, More Links can be Customized.)

Link Instruction and Disclaimer

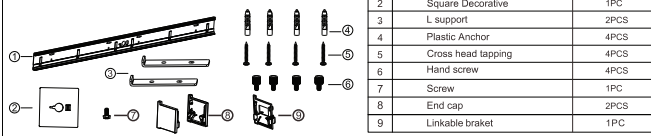


Max. linkable Quantity (Unit:PC)  
Linkable fixtures Qty need to meet the below two conditions:  
1) N ≤ 7 pcs  
2) Input voltage = 120V, N \* P ≤ 420W  
Input voltage = 277V, N \* P ≤ 960W  
Input voltage = 347V, N \* P ≤ 1200W  
Note: N = Qty of linkable fixtures,  
P = Wattage per fixture

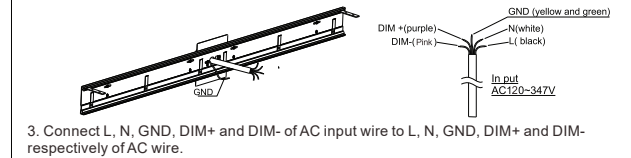
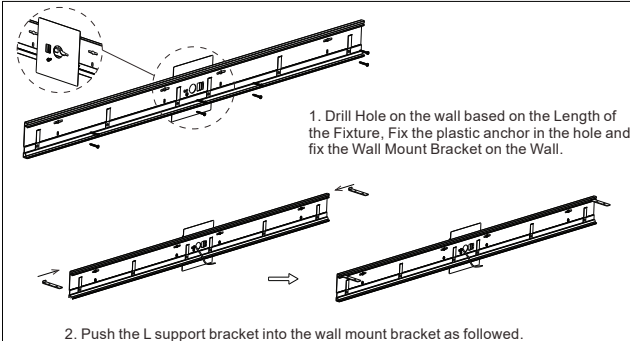
C. Wall Mount



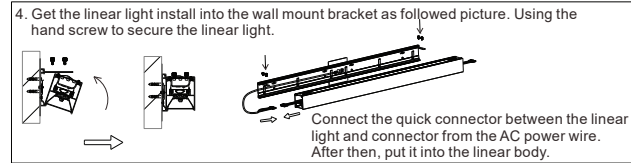
Installation Kits



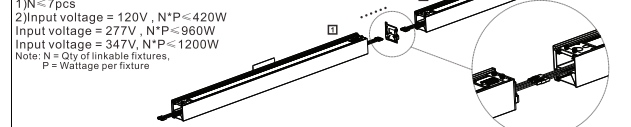
1	C Wall-mount Bracket	1PC
2	Square Decorative	1PC
3	L support	2PCS
4	Plastic Anchor	4PCS
5	Cross head tapping	4PCS
6	Hand screw	4PCS
7	Screw	1PC
8	End cap	2PCS
9	Linkable bracket	1PC



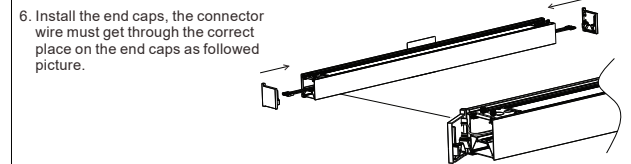
3. Connect L, N, GND, DIM+ and DIM- of AC input wire to L, N, GND, DIM+ and DIM- respectively of AC wire.



4. Get the linear light install into the wall mount bracket as followed picture. Using the hand screw to secure the linear light.



5. Linkable braket insert into one fixture, connect the male and- female connector, the other part of linkable braket insert into the other fixture. Then the fixture fixed on the wall mounted kit.



6. Install the end caps, the connector wire must get through the correct place on the end caps as followed picture.

7. Turn on the light.

D. CCT Changeable :

Note: Only available for CCT changeable products.

