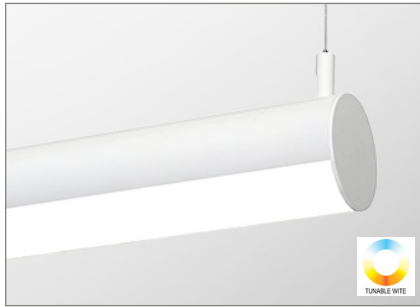


# RONDO4+TW

Up, Down, and Up and Down

Project Name:	
Type:	



**APPLICATION**

Tunable White technology can mimic the natural daylight to support Circadian Rhythm - the biological clock, innate in the human body affected by the color temperatures. Ability to adjust color temperature and the light source intensity can enhance synchronization of bodies and minds, essential to ensure maximum productivity during the course of the day. This tunable technologies can provide the ultimate solution to optimize the needs from residential to commercial, healthcare, education, retails, entertainment, office, and more.

**MOUNTING:**

- Pendant.

**FINISH:**

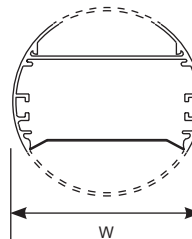
- Standard powder-coat textured white painted finish on exposed trim, consult factory for custom colors.
- Comes with snap-in acrylic lens as standard.

**LISTING:**

- UL / CUL listed.
- UL listed for dry & damp location.
- ARRA compliant.
- Warranty:
  - 265K & -275K : 5 years limited warranty.
  - 3065K : 3 years limited warranty.
- Power source: 5 years limited warranty.

**WEIGHT**

Item	lbs	kg
RONDO4-2 (Down)	6.47	2.93
RONDO4-3 (Down)	8.10	3.67
RONDO4-4 (Down)	9.89	4.48
RONDO4-4 (Up&Down)	9.18	4.16
RONDO4-8 (Down)	16.94	7.68
RONDO4-8 (Up&Down)	15.51	7.03
RHC90	10.06	4.56



**Specifications: RONDO4**

Width: 4 Dia. (101)

All dimensions are in inches (millimeters).

# RONDO4+TW

Up, Down, and Up and Down

ORDERING INFORMATION \* These custom products are non-cancellable, non-returnable, and non-refundable with the exception of manufacturer defects or damages. EXAMPLE: RONDO4-IND-4-D27L/NL-275K-UNV-ED560

MODEL	ROW <sup>1</sup>	SECTION <sup>2</sup>
<b>RONDO4-IND</b> (Individual Mount) <b>RONDO4-CON</b> (Continuous Row Mount)	<b>xx'</b> Specify nominal overall row length in 1' increments (Continuous runs)	<b>2</b> 2' Length <b>3</b> 3' Length <b>4</b> 4' Length <b>8</b> 8' Length <sup>3</sup>
<b>RONDO4-SQ</b> (Square)	<b>X'-Y'</b> Specify dimension in inches. (Minimum required dimension is 4'-4') Must provide a sketch on the last page	
<b>RONDO4-CM</b> (Custom)	Must provide a sketch on the last page	

**WIRED SOLUTION <sup>4</sup>**

LED Downlight (per/4ft)		LED Uplight (per/4ft)		SYSTEM		CRI		LED DRIVER	
<b>(Blank)</b> <b>D18L</b> <b>D27L</b> <b>D36L</b> <b>D48L</b> <b>D54L</b>	No Downlight 18W LED (734 lm/ft) 27W LED (924 lm/ft) 36W LED (991 lm/ft) 48W LED (1384 lm/ft) 54W LED (1467 lm/ft)	<b>/NL</b> <b>/U18L</b> <b>/U27L</b>	No Uplight 18W LED (600 lm/ft) 27W LED (899 lm/ft)	<b>-265K</b> <b>-275K</b> <b>-CCK</b>	Tunable White 2000-6500K Tunable White 2700-5000K Tunable White custom CCT from 2000-6500K (Must specify the CCT range)	<b>(Blank)</b> <b>C9</b>	80+ CRI 90+ CRI <sup>7</sup>	<b>ED560</b> <b>MU050</b> <b>PSQ02U</b> <b>V010V</b> <b>VDALI</b>	eldoLED LightShape DALI dim to dark, 0.1% ~ 100% 0-10V dual channel, 1% ~ 100% T-Series 1% 2-channel tunable white driver Bridgelux VESTA 0-10V Bridgelux VESTA DalI2 DT8

\* Maximum wattage per 4ft section  
- pendant/wall mount : 75W (up & down light)  
\* Contact factory for custom wattage or lumen requirement.

CONTROLS	
<b>DUALSWT-WH</b>	2-1 Dual wall switch, 120v only, white finish <sup>5</sup> * Only with "MU050" driver.

**WIRELESS SOLUTION <sup>5</sup>**

LED Downlight		LED Uplight		SYSTEM		CRI		LED DRIVER		CONTROLS <sup>4,5</sup>	
<b>(Blank)</b> <b>DLO</b> <b>DHO</b>	No Downlight Low output, 6 W/ft, 512 lm/ft High output, 12 W/ft, 1024 lm/ft	<b>(Blank)</b> <b>ULO</b> <b>UHO</b>	No Uplight Low output, 6 W/ft, 512 lm/ft High output, 12 W/ft, 1024 lm/ft	<b>-3065K</b>	Tunable White 3000-6500K With wireless solution <sup>6</sup>	<b>(Blank)</b>	90+ CRI <sup>7</sup>	<b>CV24</b> 24VDC power supply	<b>WL-MZ-WH</b> <b>BLT</b>	4-zone RF remote, white Bluetooth / Smart-phone App	
								<b>2DMX</b> 2-channel DMX512 decoder	<b>(Blank)</b>	None	
<b>(Blank)</b> <b>D18L</b> <b>D27L</b> <b>D36L</b> <b>D48L</b> <b>D54L</b>	No Downlight 18W LED (734 lm/ft) 27W LED (924 lm/ft) 36W LED (991 lm/ft) 48W LED (1384 lm/ft) 54W LED (1467 lm/ft)	<b>(Blank)</b> <b>/U18L</b> <b>/U27L</b>	No Uplight 18W LED (530 lm/ft) 27W LED (733 lm/ft)	<b>-265K</b> <b>-275K</b> <b>-CCK</b>	Tunable White 2000-6500K Tunable White 2700-5000K Tunable White custom CCT from 2000-6500K (Must specify the CCT range)	<b>(Blank)</b> <b>C9</b>	80+ CRI 90+ CRI <sup>7</sup>	<b>(Blank)</b> Bridgelux VESTA	<b>VWSC</b> <b>VWIZ</b> <b>VSVR</b> <b>VCAS</b>	Bridgelux VESTA Wisilica Bluetooth Bridgelux VESTA WIZ-connected Wi-Fi Bridgelux VESTA Silvair Bluetooth Mesh Bridgelux VESTA Casambi Bluetooth Mesh	

\* Maximum wattage per 4ft section  
- pendant/wall mount : 75W (up & down light)  
\* Contact factory for custom wattage or lumen requirement.

# RONDO4+TW

Up, Down, and Up and Down

MOUNTING		VOLTAGE		FINISH		CORD FINISH		CEILING TYPE	
(Blank)	Pendant	UNV	120-277V	(Blank)	Matte White RAL #9003 (Std.)	(Blank)	White (Std.)	X1	15/16" grid T-bar ceiling
		120	120V	*BK	Black RAL #9011	BKC	Black	X2	Hard ceiling
		277	277V	*SV	Silver RAL #9022			X3	Sloped Hard ceiling
				**CC	Custom Color			X4	9/16" T-bar ceiling
				*CSS	Custom Canopy Color (White is Std.)				
				*AMB	Anti-Microbial Coating (Matte Skye White)				
					* Non-standard finish with extra charge.				
					** CC: additional charge & set up fee. Provide RAL# code.				

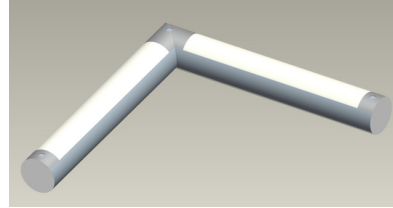
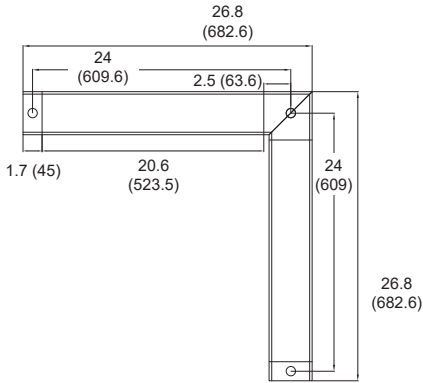
SUSPENSION LENGTH		OPTION	
AC48	Adjustable Aircraft Cable Canopy 48"L	RHC90	Lit 90° Connector
AC96	Adjustable Aircraft Cable Canopy 96"L		
ST24	Stem Canopy 24"L		
ST48	Stem Canopy 48"L		
	* Contact factory for custom length.		

**NOTES:**

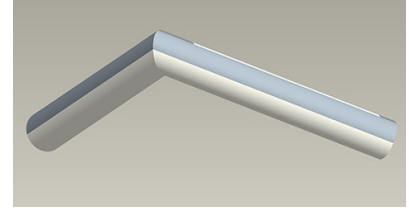
- Specify only when Continuous Row Mount.
- No need to select if same as row length and section length.
- Comes with 1pc 8ft lens.
- Refer to Table1 to find more information.
- Refer to Table2 to find more information.
- Custom wattage or lumen not available.
- Lumen per watt is approximately 15% less than standard CRI 80+.

# RONDO4+TW

Up, Down, and Up and Down

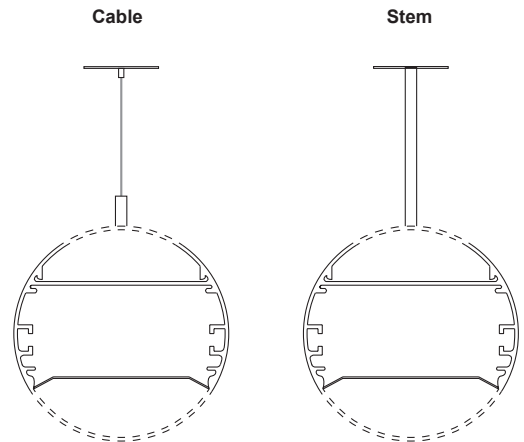
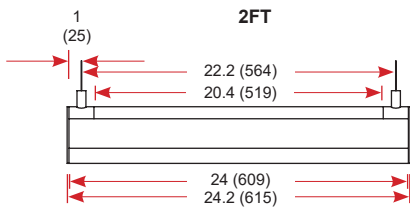
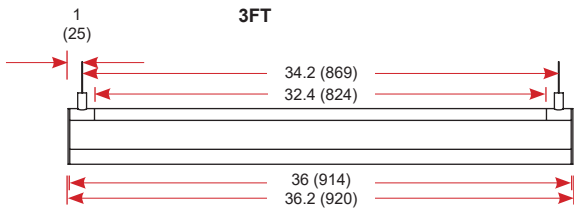
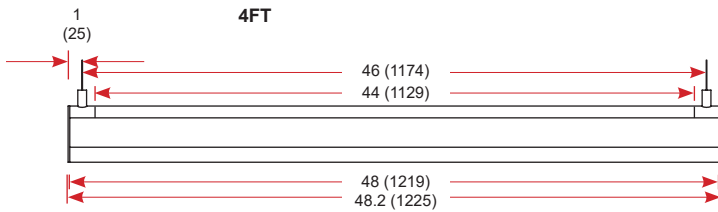
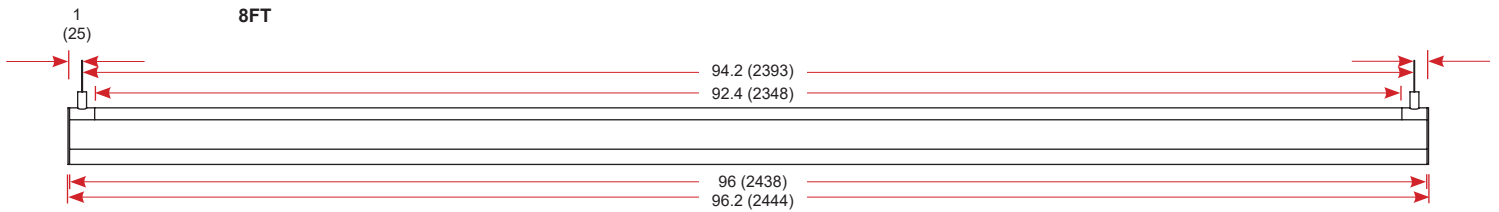


RHC90 (uplight)



RHC90 (downlight)

All dimensions are in inches (millimeters).



# RONDO4+TW

Up, Down, and Up and Down

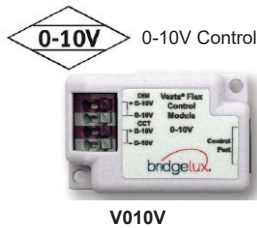
**WIRED SOLUTION (TABLE1)**

**SPECIFICATION CHART**

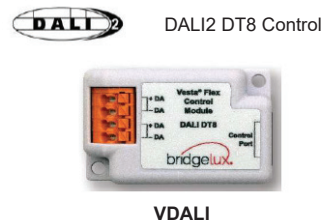
	-265K	-275K
Tunable Range	2000 - 6500K	2700 - 5000K
Lumen Efficiency	2500 lm/ft (at 3500K), >115 lm/W	
CRI	80+ (90+ optional)	
Dimming	0.1% - 100%	
Color Consistency	3-step MacAdam binning	
Lumen Maintenance	> 50,000 hours	
Control Options	DALI (#ED560), 0-10V (#MU050), Lutron T-Series (#PSQ02U), V010, VDALI	
Warranty	5 years limited warranty	

**COMPATIBLE DIMMER SWITCH CHART**

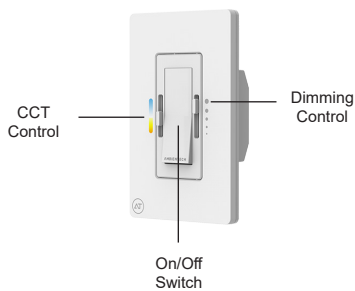
Model #	Brand	Compatible Dimmer Switch	
ED560	eldoLED DUALdrive	<Lunatone>	SS-LUNAT PS2 30mA SS-LUNAT Touch or BT SS-LUNAT Comm
MU050	Moons Intelligent indoor	<Lutron>	Diva - DVTV-xx, DVSTV-xx
PSQ02U	Lutron	<Lutron>	Quantum System Network
V010V	Bridgelux	Industry standard 0-10V dimmer switch	
VDALI	Bridgelux	Industry standard DALI2 DT8 devices	



- 0-10V control protocol.
- Two channel control of color temperature and intensity.
- Compatible with industry standard 0-10V current sourcing or 10V current sinking wired control devices



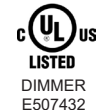
- DALI2 DT8 certified.
- Two channel control of color temperature and intensity.
- Compatible with industry standard DALI2 DT8 devices.
- Commission and manage lighting fixtures via any DALI2 certified controller.



\* Wall Plate included

**DUALSWT-WH**

Input	120VAC, ~60Hz
Max Load	600W
Dimming Curve	Linear, PWM
Compatibility	eldoLED DUALdrive, Moon's 0-10V Dual Series
Features	Field adjustable low-end trim, Built-in Relay
UL listed	UL 1472 / CSA C22.2 184.1
FCC	Class B Part 15



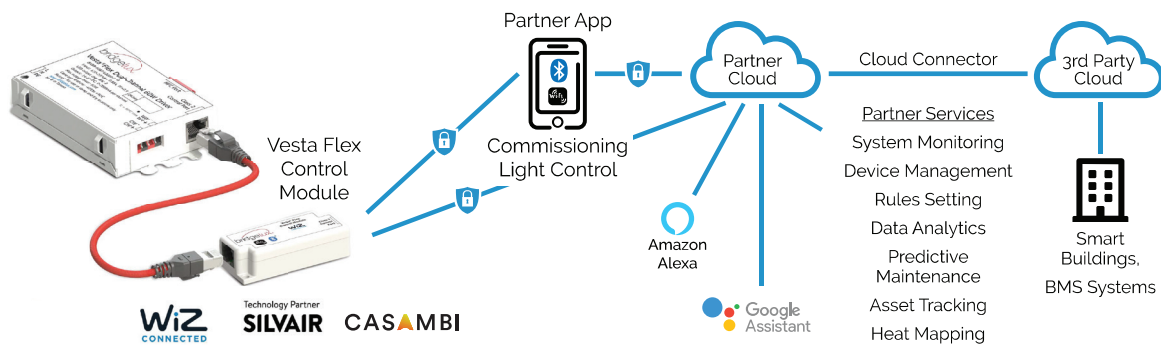
# RONDO4+TW

Up, Down, and Up and Down

**WIRELESS SOLUTION (TABLE 2)**

	-265K	-275K	-3065K
Tunable Range	2000 - 6500K	2700 - 5000K	3000 - 6500K
Lumen Efficiency	2500 lm/ft (at 3500K), >115 lm/W		512 lm/ft , up to 87.5 lm/W
CRI	80+		90+
Dimming	0.1% - 100%		PWM
Color Consistency	3-step MacAdam binning		-
Lumen Maintenance	> 50,000 hours		> 50,000 hours
Control Options	Bridgelux VESTA Bluetooth Mesh & Wi-Fi. Wisilica, WIZ, Silvoir, Casambi		Wireless remote, Bluetooth (Smartphone / APP)
Warranty	5 years limited warranty		3 years limited warranty

**-265K & -275K (CONTROLS)**



**WISILICA BLE Control**



**VVSC**

- Connect lighting fixtures to an intelligent non-flooding BLE mesh network
- Commission and manage lighting fixtures via iOS and Android apps or web portal.
- Interoperates with beacons and sensors via BLE.
- Large ecosystem of compatible sensors, switches, gateways, 3rd party clouds.
- Cloud services such as system monitoring, device management, predictive maintenance, asset tracking, data analytics.



**WIZ Wi-Fi Control**



**VVWIZ**

- Connect lighting fixture to the internet via Wi-Fi; no hub needed.
- Interoperates with sensors via BLE.
- Commission and manage lighting fixtures via iOS and Android apps or web portal.
- Large ecosystem of compatible sensors, switches, gateways, cloud platform.
- Cloud services such as system monitoring, device management, predictive maintenance, asset tracking, data analytics.



**SILVAIR BLE Control**



**VSVR**

- Interoperability with standard BLE mesh lighting ecosystem.
- iOS app and web portal interface options.
- Seamless device commissioning.
- Rules setting and supervision, energy usage monitoring.
- Data gathering on usage, locations, users, time of day.
- Automation based on users and sensors.
- Ecosystem with sensors, switches.
- Firmware updates over the air.
- Customizable and integration-ready APIs.



**CASAMBI BLE Control**



**VCAS**

- Casambi proprietary Bluetooth Low Energy mesh protocol.
- iOS app and Android app interface options.
- Seamless device commissioning.
- Rules setting and supervision, predictive maintenance.
- Data gathering on usage, locations, users, time of day.
- Automation based on users and sensors.
- Firmware updates over the air.
- Customizable and integration-ready APIs.
- Ecosystem with sensors and switches, and luminaires.
- Multi level security.



# RONDO4+TW

Up, Down, and Up and Down

**-3065K (CONTROLS)**



**WL-MZ-WH (Wireless Wall remote)**

Dimensions	L 4.3" x W 2" x D 0.85"
Weight	0.1 lbs
Signal Type	RF (Radio Frequency) 2.4GHz
Zone	4 zone
Range	98ft from fixture
Working Temp.	-4°F to 131°F (-20°C to 55°C)
* Battery	2 x AAA battery

\* Not included.



Smart Life



Tuya Smart

**BLT (Bluetooth / Smartphone App)**

Bluetooth	
Software	IOS 8.0 and up, Android 4.4 and up
App	Smart Life or Tuya Smart supported
Features	Group, Scenes
Bluetooth Distance	> 49ft in open area
Additional Feature	Home Management / Third party control -> Alexa, Google Assistant (by others)

**2DMX**



**2DMX (2-channel DMX decoder)**

Dimensions	L 7" x W 1.8" x D 1.2"
Output Current	8A / channel
Input Voltage	12-24V DC
Output Power	384W @ 24V
Frequency	PWM

# ARCHITECTURAL LINEAR

## RONDO4 LIT CONNECTOR PATTERNS

The lit connector system allows continuous illumination all the way through the corner section.

### Instruction:

- Provide sketches illustrating corner types and overall dimensions.
- Must provide the power location in the drawing.
- Utopia Lighting will decide the optimal fixture combination unless otherwise specified in the drawing

