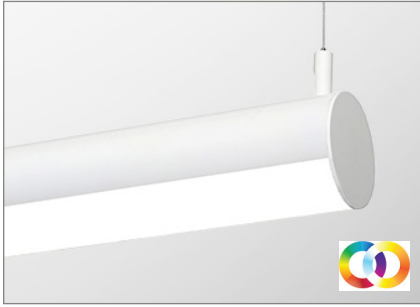


# RONDO4

Up, Down, and Up and Down

Project Name:	
Type:	



**APPLICATION**

These color capable luminaires bring flexibility and open doors to various types of applications. The RGB technology is a combination of three primary colors - red, green, and blue - to form a different array of colors. The RGBW technology is a combination of those three primary colors in addition to white. Additional white LEDs illuminates a much purer white tone and brings flexibility for color mixing through the RGB chips. Playing with different colors of the LEDs can form infinite color hue possibilities to not only just illuminate space, but manipulate for your desired hue and shades. Flexible control solutions from wireless remote, Bluetooth, to DMX512 with a wall mount touch panel can provide an ultimate solution to optimize the needs from residential to commercial, healthcare, education, retails, entertainment, office, and more.

**MOUNTING:**

- Pendant.

**FINISH:**

- Standard powder-coat textured white painted finish on exposed trim, consult factory for custom colors.
- Comes with snap-in acrylic lens as standard.

**LISTING:**

- UL / CUL listed.
- Listed to UL 1598 and UL 8750
- UL listed for dry & damp location.
- Assembled in USA.
- Warranty:

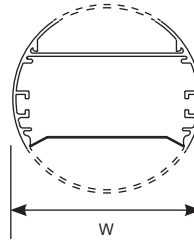
**Power Supply:** 5 years limited warranty.

**DMX:** 3 years limited warranty.

**LED:** 3 years limited warranty.

**WEIGHT**

Item	lbs	kg
RONDO4-2 (Down)	6.47	2.93
RONDO4-3 (Down)	8.10	3.67
RONDO4-4 (Down)	9.89	4.48
RONDO4-4 (Up&Down)	9.18	4.16
RONDO4-8 (Down)	16.94	7.68
RONDO4-8 (Up&Down)	15.51	7.03
RHC90	10.06	4.56



Specifications: RONDO4

Width: 4 Dia. (101)

All dimensions are in inches (millimeters).

# RONDO4

Up, Down, and Up and Down

**ORDERING INFORMATION**

\*These custom products are non-cancellable, non-returnable, and non-refundable with the exception of manufacturer defects or damages.

**EXAMPLE: RONDO4-IND-4-DLO-RGBW-40K-UNV**

MODEL	ROW <sup>1</sup>		SECTION <sup>2</sup>		LED Downlight (per/4ft section)		LED Uplight (per/4ft section)		SYSTEM <sup>4</sup>							
<b>RONDO4-IND</b> (Individual Mount) <b>RONDO4-CON</b> (Continuous Row Mount)	<b>xx</b>	Specify nominal overall row length in 1' increments (Continuous runs)	<b>2</b>	2' Length	<b>DLO</b>	Low output, 9.3W/ft	<b>NL</b>	Zero Uplight	<b>RGBW-30K</b>	RGBW with wireless or Bluetooth solution, 3000K white <sup>5</sup>						
			<b>3</b>	3' Length							<b>DHO</b>	High output, 18.6W/ft	<b>ULO</b>	Low output, 9.3W/ft	<b>RGBW-40K</b>	RGBW with wireless or Bluetooth solution, 4000K white <sup>5</sup>
			<b>4</b>	4' Length												
<b>RONDO4-SQ</b> (Square) <b>RONDO4-CM</b> (Custom)	<b>X'-Y'</b>	Specify dimensions in inches (Minimum required dimension is 4'-4') <small>* Must provide a sketch on the last page.</small>		8' Length <sup>3</sup>												

\* Number of circuit(s) should be determined by the customer prior to ordering the continuous run considering the AC input voltage and total run wattage.

MOUNTING		VOLTAGE		FIXTURE FINISH			CORD FINISH		CANOPY FINISH					
<b>(Blank)</b>	Pendant	<b>UNV</b>	120-277V	<b>(Blank)</b>	Matte White RAL#9003 (Std.)	<b>(Blank)</b>	White (Std.)	<b>(Blank)</b>	White (Std.)	<b>*BC</b>				
				<b>*BK</b>	Black RAL #9011						<b>*BKC</b>	Black <sup>6</sup>	<b>*BC</b>	Black Canopy
				<b>**CC</b>	Custom Color								<b>*SC</b>	Silver Canopy
				<b>*AMB</b>	Anti-Microbial Coating (Matte Skye White)								<b>**CSS</b>	Custom Canopy Color (White is Std.)

\* Non-standard finish with extra charge.  
\*\* Additional charge & set up fee.

CEILING TYPE		SUSPENSION LENGTH		LED DRIVER		CONTROLS <sup>5,7</sup>			
<b>X1</b>	15/16" grid T-bar ceiling	<b>AC48</b>	Adjustable Aircraft Cable Canopy 48"L	<b>CV24</b>	24VDC Power Supply	<b>WL-MZ-WH</b>	4-Zone RF remote, white		
<b>X2</b>	Hard ceiling	<b>AC96</b>	Adjustable Aircraft Cable Canopy 96"L			<b>WL-MZ-BK</b>	4-Zone RF remote, black		
<b>X3</b>	Sloped Hard ceiling	<b>ST24</b> <b>ST48</b>	Stem Canopy 24"L	<b>4DMX</b>	4-Channel DMX512 decoder <sup>7</sup>	<b>BLT</b>	Bluetooth / Smartphone App		
<b>X4</b>	9/16" T-bar ceiling		Stem Canopy 48"L			<b>(Blank)</b>	No options or controls from below		
			<small>* Contact factory for custom length.</small>			<b>DMXT14</b>	4-zone DMX512 wall mount touch panel, 85-265VAC input only		
						<b>DMXT8</b>	4-zone DMX512 wall mount touch panel, 5vdc adapter provided		

OPTIONS	
<b>EMG8</b>	8W EM Battery Backup <sup>8</sup>
<b>EMG15</b>	15W EM Battery Backup <sup>8</sup>
<b>EMG20</b>	20W EM Battery Backup <sup>8</sup>
<b>EMC</b>	CEC compliant EM <sup>8</sup>
<b>UDSC</b>	Up and Down separate control
<b>WL-HLD-WH</b>	Remote holder for WL-MZ, white
<b>WL-HLD-BL</b>	Remote holder for WL-MZ, black

**NOTES:**

- Specify only when Continuous Row Mount.
- No need to select, if same as row and section length.
- Comes with 1pc 8ft lens
- Custom wattage or lumen not available.
- Refer to RGBW chart (Table 1) to find more information.
- Not available with EM option.
- Refer to DMX chart (Table 2) to find more information.
- EM mode will operate with white LED.

# RONDO4

Up, Down, and Up and Down

### RGBW CONFIGURATION

Input Voltage	24V
Watt / foot	9.3 W/ft, 563 lm/W
Lumen / foot	R: 36.82 lm/ft
	G: 79.55 lm/ft
	B: 25.82 lm/ft
	W: 100.35 lm/ft (30K), 116.8 lm/ft (40K)
CRI for white LEDs	80
Color Consistency	3-step MacAdam binning
Lumen Maintenance	> 50,000 hours
Control Options	Wireless Easy control remote, Group / Multi Zone wireless remote, Bluetooth (Smartphone / APP)
Warranty	5 years limited warranty for power supply, 15 years limited warranty for LED source

### CONTROL (TABLE 1)



\* Remote holder sold separately

#### WL-MZ (RF remote control)

Dimensions	W 2" x D 0.825" x H 4.725"
Weight	0.1lbs
Signal Type	RF (Radio Frequency) 2.4GHz
Range	98ft from fixture open air
Zone / Mode	4 zones / 9 modes
Working Temp.	-4°F to 131°F (-20°C to 55°C)
* Battery	2 x AAA battery

\* Not included



WL-HLD-WH



WL-HLD-BK



Smart Life



Tuya Smart

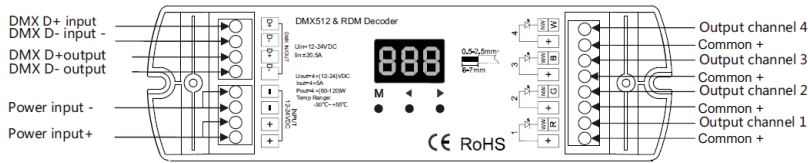
#### BLT (Bluetooth / Smartphone App)

	Bluetooth
Software	IOS 8.0 and up, Android 4.4 and up
App	Smart Life or Tuya Smart supported
Features	Group, Scenes
Bluetooth Distance	> 49ft in open area
Additional Feature	Home Management / Third party control -> Alexa, Google Assistant (by others)

# RONDO4

Up, Down, and Up and Down

**4DMX (TABLE2)**



**4DMX (4-channel DMX decoder)**

Dimensions	L 6.7" x W 2" x D 0.9"
Output Current	5A / channels
Input Voltage	12-24V DC
Output Power	4 x (60-120)W
Frequency	PWM output



**DMXT14**

Zone	4 zone
Signal	DMX512 protocol
Input Voltage	85-265VAC
Dimensions	L 3.4" x H 3.4" x D 1.45"
Features	10 built-in mode, scene
Operating Temp.	-22°F ~ 131°F (-30°C ~ 55°C)

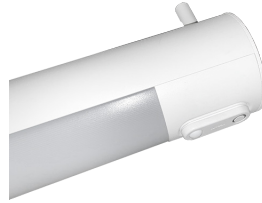


**DMXT8**

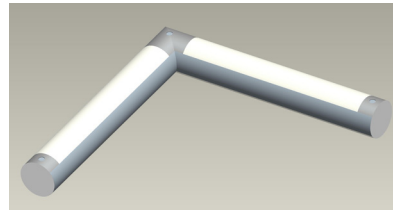
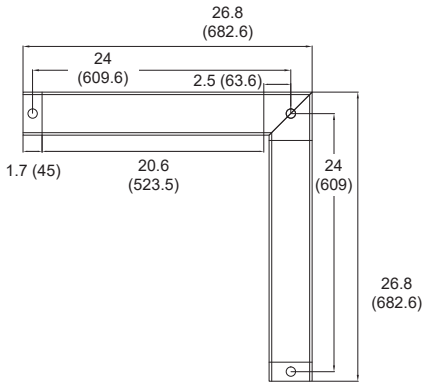
Zone	4 zone
Signal	DMX512 protocol
Dimensions	L 7" x H 1.3" x D 1.9"
Features	12 built-in mode, scene
Operating Temp.	-22°F ~ 131°F (-30°C ~ 55°C)

# RONDO4

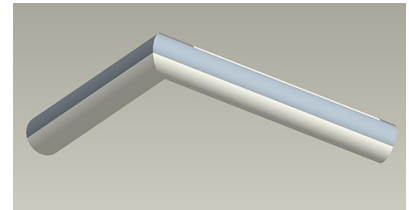
Up, Down, and Up and Down



Lutron Vive Integral  
fixture control installation

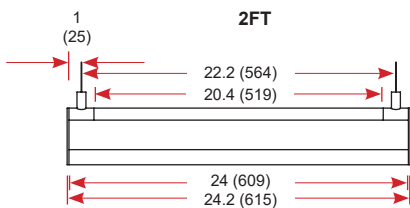
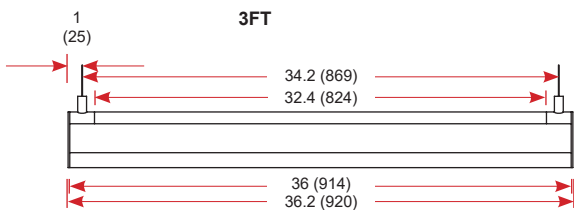
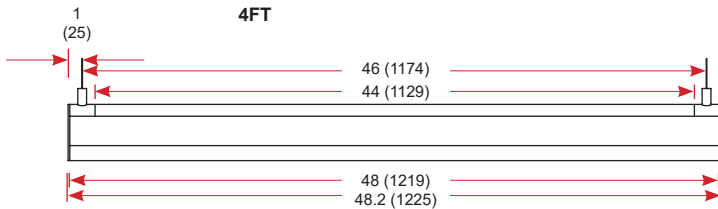
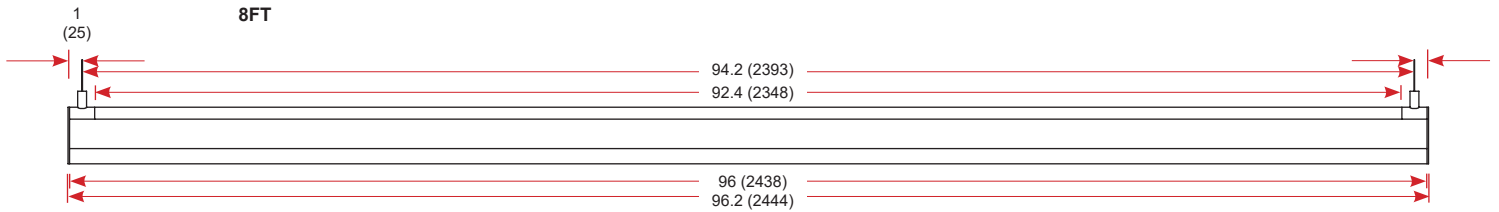


RHC90 (uplight)



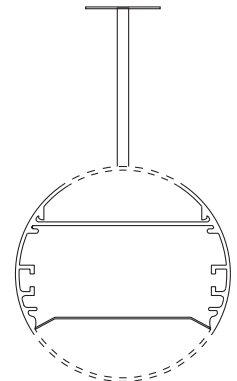
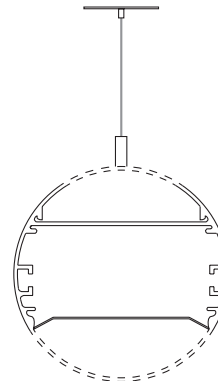
RHC90 (downlight)

All dimensions are in inches (millimeters).



Cable

Stem



# ARCHITECTURAL LINEAR

## RONDO4 LIT CONNECTOR PATTERNS

The lit connector system allows continuous illumination all the way through the corner section.

**Instruction:**

- Provide sketches illustrating corner types and overall dimensions.
- Must provide the power location in the drawing.
- Utopia Lighting will decide the optimal fixture combination unless otherwise specified in the drawing

